

GILMORE ESTATES

Property Sales & Lettings



Western Avenue , Prudhoe, NE42 6PA

This delightful three-bedroom semi-detached house offers a perfect blend of comfort and convenience. With two spacious reception rooms, including a lovely lounge that flows seamlessly into the dining area, this home is ideal for both relaxation and entertaining.

The property boasts a bright conservatory, providing a wonderful space to enjoy the garden views throughout the year. The well-appointed kitchen, along with a practical utility room, ensures that all your culinary needs are met with ease.

Upstairs, you will find three inviting bedrooms, perfect for families or those seeking extra space for guests or a home office. The bathroom is conveniently located to serve all bedrooms, making morning routines a breeze.

Offers Over £160,000

Western Avenue

, Prudhoe, NE42 6PA



- SEMI DETACHED HOUSE
- THROUGH LOUNGE DINING ROOM
- CONSERVATORY
- KITCHEN AND UTILITY ROOM
- THREE BEDROOMS
- ATTACHED GARAGE
- GARDENS FRONT AND REAR
- NO ONWARD CHAIN

Entrance Porch

6'9" x 4'6" (2.07 x 1.39)

Entrance Hallway

11'11" x 6'2" (3.64 x 1.88)

Lounge

11'11" x 13'5" (3.64 x 4.10)

Dining Room

11'1" x 8'7" (3.40 x 2.63)

Conservatory

9'7" x 9'7" (2.94 x 2.93)

Kitchen

9'5" x 10'8" (2.89 x 3.27)

Utility Room

9'1" x 8'8" (2.77 x 2.66)

First Floor Landing

5'9" x 8'2" (1.77 x 2.50)

Bedroom One

11'6" x 10'1" (3.51 x 3.09)

Bedroom Two

8'11" x 11'3" (2.74 x 3.43)

Bedroom Three

7'8" x 8'0" (2.35 x 2.45)

Bathroom

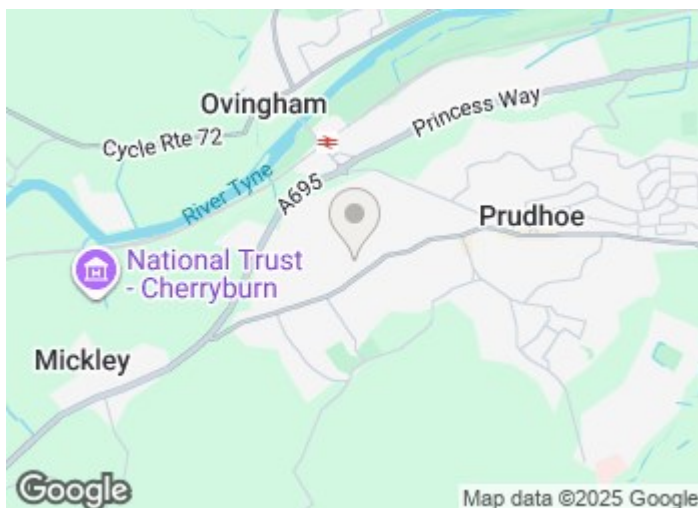
5'10" x 8'3" (1.78 x 2.52)

Garage

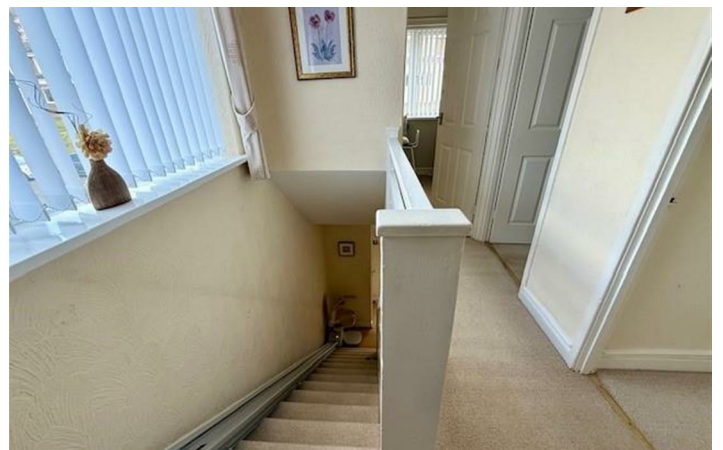
17'2" x 8'9" (5.25 x 2.67)

Front Garden

Rear Garden



[Directions](#)





Floor Plan

These particulars, whilst believed to be accurate are set out as a general outline only for guidance and do not constitute any part of an offer or contract. Intending purchasers should not rely on them as statements of representation of fact, but must satisfy themselves by inspection or otherwise as to their accuracy. No person in this firm's employment has the authority to make or give any representation or warranty in respect of the property.

